

## HYDAC INTERNATIONAL



### HYDAC clamps

Buegu clamp HRBGS

Oval clamp HROS

#### General

Special operating conditions require special mounting options. HYDAC clamps enable efficient fastening of hydraulic pipes, hoses and lines, and simultaneously guarantee long-term safety.

#### Buegu clamp

The Buegu clamp is designed for single lines and pairs of lines with a diameter from 6 to 32 mm.

The clamp can also be used for pairs of lines with different diameters.

Its rubber body makes the clamp particularly sound-absorbing and vibration-damping.

The steel parts of the clamp are also available in stainless steel.

Due to the special design of the clamp, a permanent torque and therefore defined compression of the rubber body is guaranteed.

#### Oval clamp

The Oval clamp is an inexpensive solution for fastening cables, hoses, and gas, oil and lubrication lines.

The special design requires little installation space and ensures rapid installation. The pipes/lines are clamped securely due to pre-tensioning, and the cover plate ensures a high level of stability. A film hinge connects the two clamp halves. It is fastened using bolts or weld studs M6.

Available in diameters from 6 to 22 mm, different pipe diameters can be combined in the Oval clamp.

Metallic parts are also available in stainless steel.

NOTE

The information in this brochure relates to the operating conditions and applications described. For applications and operating conditions not described, please contact the relevant technical department.

The operator is always responsible for determining the product suitability for the specific application. Quantified values for product characteristics are average values for a new product that undergo a time deterioration process.

Subject to technical modifications and errors.

EN 8.184.7/04.24

## HYDAC INTERNATIONAL

### Buegu clamp HRBGS



Size	Pipe outside Ø d1 - d2* [mm]
0A	6
	8
	10
	12
0B	10
	12
	14
	15
	16
	18
	19
	20
0C	21.3
	22
	23
	25
	25.4
	28
	30
	32
1	6 - 6
	8 - 8
	10 - 10
	12 - 12
2	10 - 10
	12 - 12
	15 - 15
	16 - 16
	17.1 - 17.1
	18 - 18
	19 - 19
	20 - 20
3	21.3 - 21.3
	22 - 22
	23 - 23
	25 - 25
	25.4 - 25.4
	28 - 28
	30 - 30
	32 - 32

\* Other Ø combinations on request

#### Model code (also order example)

HRBGS 1 A1 12-12 TPE ST M BL

#### Range

HRBGS = HY-ROS Buegu clamp

#### Size

0A = size 0A  
0B = size 0B  
0C = size 0C  
1 = size 1  
2 = size 2  
3 = size 3

**Model for complete clamps** A = with weld plate, rubber body, sleeve, stirrup and hex. head bolt A1 = with rubber body, sleeve, stirrup und hex. head bolt A1TM = with rubber body, sleeve, stirrup, hex. head bolt and mounting rail nut (C mounting rail not included with this model)

**Diameter** Specification of each Ø as per pipe outside Ø (size 0 one specification, size 1-3 two specifications) **Material of rubber body** TPE = thermoplastic elastomer (standard: 73° Shore A)

#### Material of steel parts

ST = steel  
A4 = stainless steel (on request)

#### Thread type

M = metric thread

#### Plating of steel parts

BL = weld plate unplated; stirrup, sleeve and bolt zinc-plated  
ZN = zinc-plated

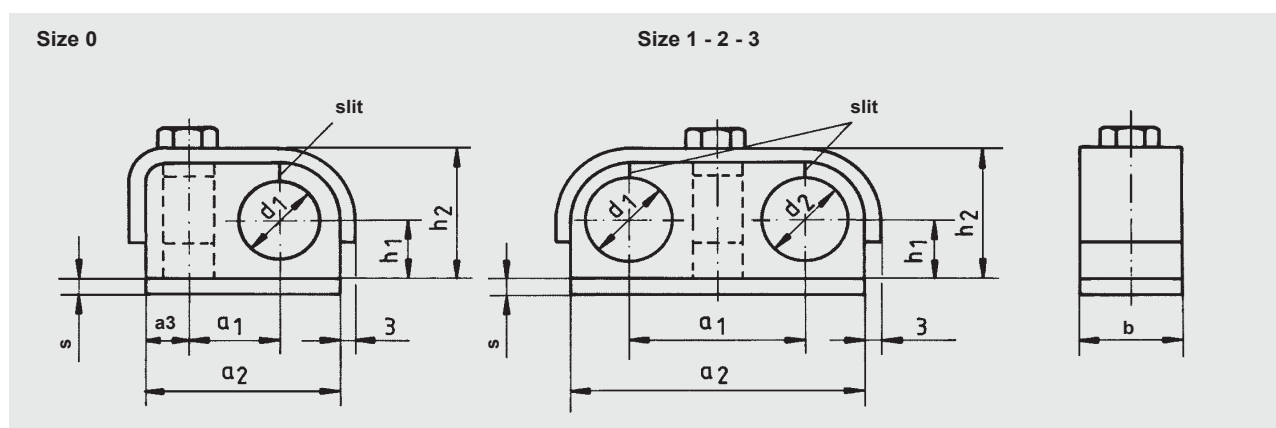
**Note:** Exposed parts may show signs of flash rust!

EN 8.184.7/04.24

## Models for Buegu clamp

Size	Model A with weld plate	Model A1 for mounting on base	Model A1TM with mounting rail nut for installation on C mounting rail
0A, 0B, 0C			
1, 2, 3			

## Dimensions

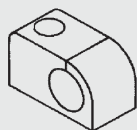


Size	Dimensions [mm]							Hex. head for model			Sleeve height for model [mm]		
	a1	a2	a3	b	h1	h2	s	A	A1	A1TM	A	A1	A1TM
0A	15	34	9	20	10	9	20	M6 x 25	M6 x 30	M6 x 25	11.5	18	11.5
0B	18	39	15	30	20			M6 x 25	M6 x 35	M6 x 30	15.5	22	15.5
0C	23.5	57.5				43	5	M8 x 45	M8 x 50	M8 x 45	32	38	32
1	30	50	-20		10	23	3	M6 x 25	M6 x 30	M6 x 25	11.5	18	11.5
2	35	59	-20		12	27	3	M6 x 25	M6 x 35	M6 x 30	15.5	22	15.5
3	47	86	-30		20	43	5	M8 x 45	M8 x 50	M8 x 45	32	38	32

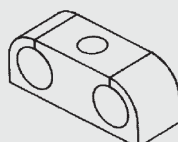
## Individual parts for Buegu clamp

### Rubber body (GT)

Size 0A, 0B, 0C



Size 1, 2, 3



### Model code

(also order example)

HRBGS 0A GT 12 TPE

**Range** HRBGS = HY-ROS Buegu clamp

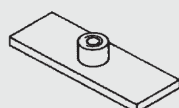
**Size**  
0A, 0B, 0C, 1, 2, 3

**Designation**  
GT = rubber body

**Diameter**  
Specification of each Ø as per pipe outside Ø  
(size 0 one specification, size 1-3 two specifications)

**Material of clamp body**  
TPE = thermoplastic elastomer (standard: 73° Shore A)

### Weld plate (AP)



### Model code

(also order example) HRBGS 0A AP ST M BL Range

HRBGS = HY-ROS Buegu clamp

**Size**  
0A, 0B, 0C, 1, 2, 3

**Designation**  
AP = weld plate

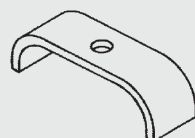
**Material of steel parts**  
A4 = stainless steel (on request)

**Thread type**  
M = metric thread **Plating**

**of steel parts** BL =  
unplated ZN = zinc-plated

**Note:** Exposed parts may show signs of flash rust!

### Stirrup (BUE)



### Model code

(also order example)

HRBGS 3 BUE ST ZN

**Range** HRBGS = HY-ROS Buegu clamp

**Size**  
0A, 0B, 0C, 1, 2, 3

**Designation** BUE  
= stirrup

**Material of steel parts**  
ST = steel  
A4 = stainless steel (on request)

**Plating of steel parts**  
ZN = zinc-plated

## Sleeve (HUE)



## Model code

(also order example)

HRBGS HUE 11.5 ST ZN

### Range

HRBGS = HY-ROS Buegu clamp

### Designation

HUE = sleeve

### Length

(length depends on size and model of Buegu clamp)

### Material of steel parts

ST = steel

A4 = stainless steel (on request)

### Plating of steel parts

ZN = zinc-plated

## Hex. head bolt (hex. head bolt ISO 4014 / 4017)



## Model code

(also order example)

6kt-shr.ISO4014 - M6 x 30 - 8.8 A3B

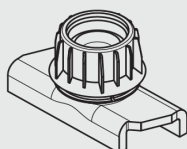
**Range** 6kt-shr.ISO4014 = hex. head bolt to ISO 4014 6kt-shr.ISO4017 = hex. head bolt to ISO 4017 **Size** ISO4014 ISO4017 M6 x 30 M6 x 25 M6 x 35 M8 x 45 M8 x 50 **Bolt quality** 8.8 = to ISO 4014, ISO 4017

### Bolt plating A3B =

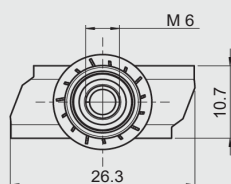
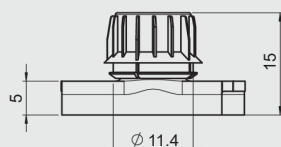
zinc-plated

Others on request

## Mounting rail nut (TM)



## Dimensions



## Model code

(also order example)

HRL TMV6 ST ZN

### Range HRL = HY-ROS light

range **Designation**

TMV6 = mounting rail nut with anti-twist protection, size M6 (standard)

TM6 = mounting rail nut without anti-twist protection, size M6

### Material of steel parts

ST = steel

A4 = stainless steel (on request)

### Plating of steel parts

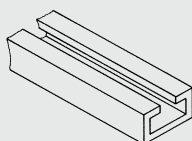
ZN = zinc-plated

Others on request

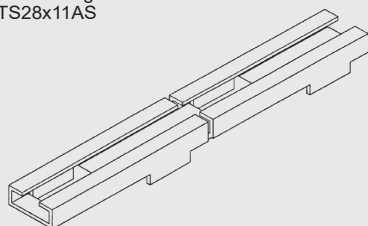
## Accessories

### C mounting rail (TS)

C mounting rail TS

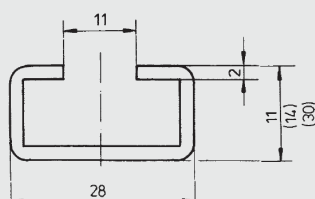


C mounting rail with weld struts  
TS28x11AS

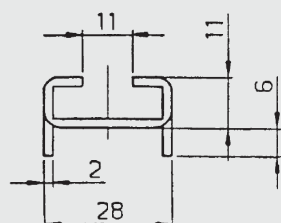


### Dimensions

C mounting rail TS available in  
1 m and 2 m pieces



C mounting rail TS with weld struts AS  
available in 1 m pieces



### Model code

(also order example)

HRL TS28x11 ST BL 1m

### Range

HRL = HY-ROS light range

### Model

TS28x11 = C mounting rail 28x11

TS28x14 = C mounting rail 28x14

TS28x30 = C mounting rail 28x30

TS28x11AS = C mounting rail with weld struts 28x11

### Material of steel parts

ST = steel

AL = aluminium (on request)

A2 = stainless steel (on request)

A4 = stainless steel (on request)

### Plating of steel parts

BL = unplated

ZN = zinc-plated

Others on request

### Length

1 m

2 m (not for C mounting rail with weld struts)

Other lengths on request

**Note:** Exposed parts may show signs of flash rust!

NOTE

The information in this brochure relates to the operating conditions and applications described. For applications and operating conditions not described, please contact the relevant technical department.

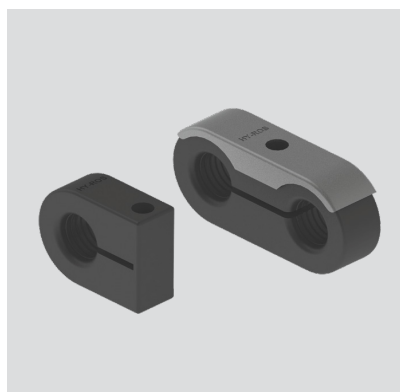
The operator is always responsible for determining the product suitability for the specific application. Quantified values for product characteristics are average values for a new product that undergo a time deterioration process.

Subject to technical modifications and errors.

EN 8.184.7/04.24



## HYDAC INTERNATIONAL



### Oval clamp HROS

Size	Pipe outside Ø d1 - d2* [mm]
0a	6
	6.4
	8
0b	8
	9.5
	10
	12
0c	12.7
	10
	12
	12.7
	13.5
	14
0d	15
	16
	14
	15
	16
	17.2
	18
	19
1	20
	21.3
	22
	6
2	6.4
	8
	8
	9.5
3	10
	12
	12.7
	13.5
	14
	15
4	16
	14
	15
	16
	17.2
	18
	19
	20
	21.3
	22
	25
	25.4

\* different Ø possible in sizes 1-4

### Model code (also order example)

HROS 3 KP 15-15 PP

**Range**  
HROS = HY-ROS Oval clamp

**Size**  
0a = size 0a  
0b = size 0b  
0c = size 0c  
0d = size 0d  
1 = size 1  
2 = size 2  
3 = size 3  
4 = size 4

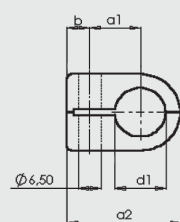
**Model for complete clamps**  
KP = pair of clamp jaws

**Diameter**  
Specification of each Ø as per pipe outside Ø (size 0 one specification, size 1-4 two specifications)

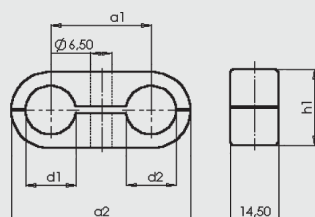
**Material of clamp jaws**  
PP = polypropylene  
PA = polyamide

## Dimensions

Size 0



Size 1 - 4



Size	Dimensions [mm]							Torques [max. Nm]	
	d1, d2*			a1	a2	b	h1	Material PA	Material PP
0a	6	...	8	9	23	7	13.5	1	1
0b	8	...	12.7	11	27	7	18.5	2	1
0c	10	...	16	15	34	7	23.5	2	1
0d	14	...	22	19	40	6	30.5	5	2
1	6	...	8	18	32	-	13.5	1	1
2	8	...	12.7	22	41	-	18.5	2	1
3	10	...	16	30	54	-	23.5	4	2
4	14	...	22	38	69	-	30.5	4	2

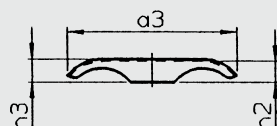
\* = pipe outside

Ø

## Accessories

Cover plate (DP)

Size 1 - 4



Size	Dimensions [mm]		
	a3	h2	h3
1	29	4	4.5
2	40	4	4.5
3	50.5	7.6	8.2
4	63	7.6	8.2

### Model code

(also order example)

HROS 3 DP ST ZN

### Range

HROS = HY-ROS Oval clamp

### Size

1, 2, 3, 4

### Designation

DP = cover plate

### Material of steel parts

ST = steel

A4 = stainless steel (on request)

### Plating of steel parts

ZN = zinc-plated

## NOTE

The information in this brochure relates to the operating conditions and applications described. For applications and operating conditions not described, please contact the relevant technical department.

The operator is always responsible for determining the product suitability for the specific application. Quantified values for product characteristics are average values for a new product that undergo a time deterioration process.

Subject to technical modifications and errors.